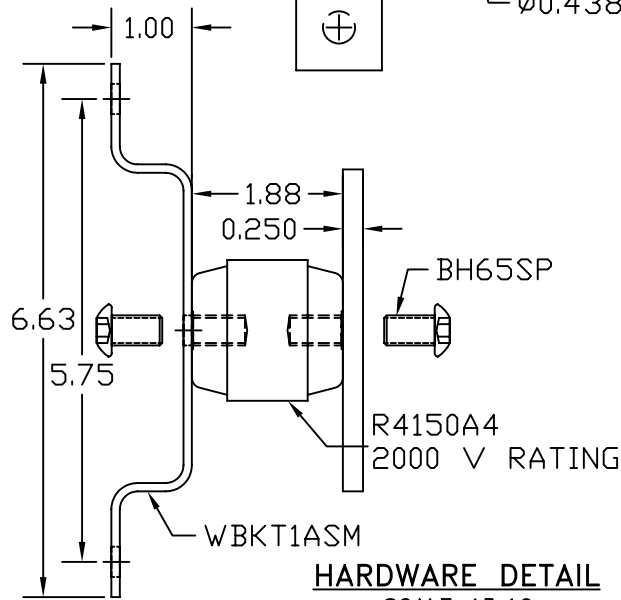


GROUND BAR ASSEMBLY



HARDWARE DETAIL  
SCALE 15:16

EST. WEIGHT 7.21 LBS

APPROVED

☐ AS DRAWN: \_\_\_\_\_  
☐ AS NOTED: \_\_\_\_\_  
DATE: \_\_\_\_\_

THIS DOCUMENT AND THE CONTENTS THEREOF IS THE PROPERTY OF HARGER INC., AND IS FURNISHED TO YOU FOR INFORMATION ONLY. THE INFORMATION CONTAINED HEREIN IS CONFIDENTIAL AND OF A PROPRIETARY NATURE AND MUST NOT BE DISCLOSED TO THIRD PARTIES WITHOUT THE EXPRESS WRITTEN APPROVAL OF HARGER INC.

|                          |                             |                      |     |
|--------------------------|-----------------------------|----------------------|-----|
|                          |                             |                      |     |
|                          |                             |                      |     |
|                          |                             |                      |     |
|                          |                             |                      |     |
|                          |                             |                      |     |
| A                        | BH65SP WAS CS66S, LW6S, W6S | 021508               | DVB |
| LET                      | REVISION                    | DATE                 | BY  |
| TOLERANCES UNLESS NOTED: |                             |                      |     |
| FRACTIONAL               | +/- 1/16                    | 3RD ANGLE PROJECTION |     |
| .00                      | +/- .030                    |                      |     |
| .000                     | +/- .010                    |                      |     |

PART NO. GBI14420C  
CU GROUND BAR ASSEMBLY

DRAWN BY:  
LAL  
CHECKED BY:  
—  
DATE:  
071497

**HARGER™**  
301 ZIEGLER DRIVE  
GRAYSLAKE, IL 60030  
(847) 548-8700

REVISION:  
A  
SCALE:  
7/16  
SHEET:  
1 OF 1