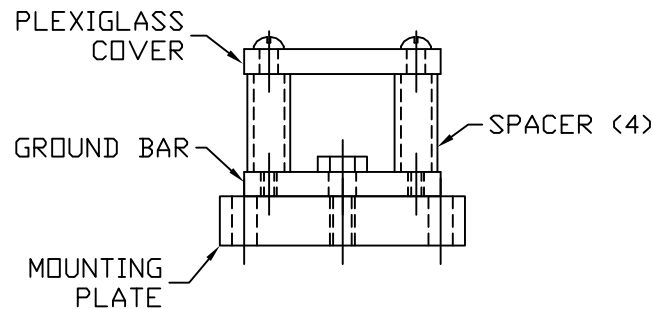
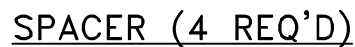


## PLASTIC MOUNTING PLATE



## GROUND BAR ASSEMBLY


EST WT 1.45#

☐ AS DRAWN: \_\_\_\_\_

☐ AS NOTED: \_\_\_\_\_

DATE: \_\_\_\_\_

THIS DOCUMENT AND THE CONTENTS THEREOF IS THE PROPERTY OF HARGER INC., AND IS FURNISHED TO YOU FOR INFORMATION ONLY. THE INFORMATION CONTAINED HEREIN IS CONFIDENTIAL AND OF A PROPRIETARY NATURE AND MUST NOT BE DISCLOSED TO THIRD PARTIES WITHOUT THE EXPRESS WRITTEN APPROVAL OF HARGER INC.

-	-	-	-
-	-	-	-
D	ADDED PKG INFO	040203	WSM
C	UPDATED DWG	032603	WSM
B	ADDED BOM & LABEL	102899	LAL
A	WAS DRILL	092899	KAB
LET	REVISION	DATE	BY
TOLERANCES UNLESS NOTED:		3RD ANGLE	
FRACTIONAL	+/- 1/16	PROJECTION	
.00	+/- .030		
.000	+/- .010		

1/4 X 2 X 6 GROUND BAR W/ PLEXI  
RAYTHEON SERVICE -

DATE:

301 ZIEGLER DRIVE  
GRAYSLAKE, IL 60030  
(847) 548-8700

SHEET:  
OF 1