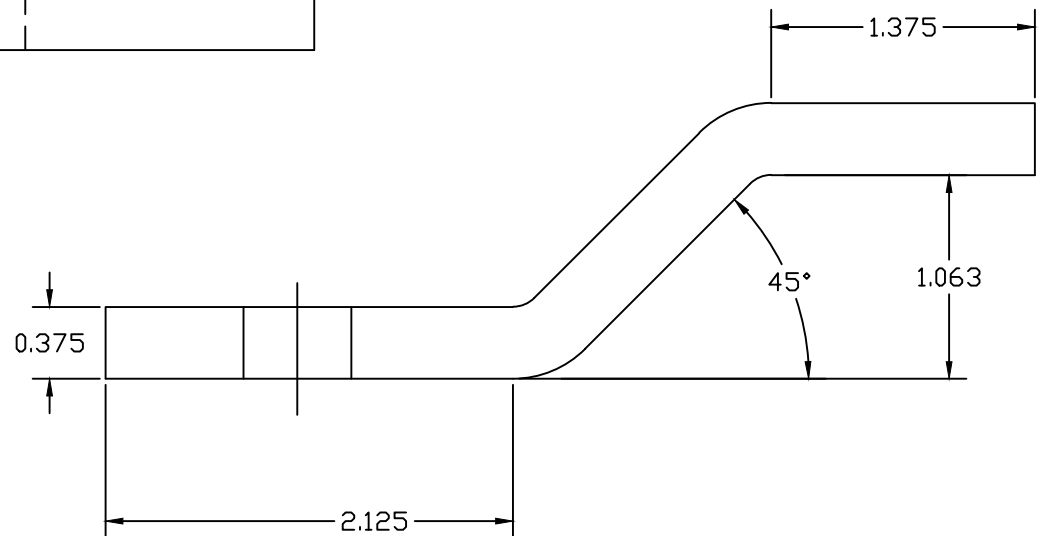


FLAT LAYOUT



TINNED COPPER OFFSET WELD LUG

EST WT 1.3#


APPROVED

☐ AS DRAWN: _____

☐ AS NOTED: _____

DATE: _____

THIS DOCUMENT AND THE CONTENTS THEREOF IS THE PROPERTY OF HARGER INC., AND IS FURNISHED TO YOU FOR INFORMATION ONLY. THE INFORMATION CONTAINED HEREIN IS CONFIDENTIAL AND OF A PROPRIETARY NATURE AND MUST NOT BE DISCLOSED TO THIRD PARTIES WITHOUT THE EXPRESS WRITTEN APPROVAL OF HARGER INC.

-	-	-	-
LET	REVISION	DATE	BY
TOLERANCES UNLESS NOTED:		3RD ANGLE	
FRACTIONAL +/- 1/16		PROJECTION	
DECIMAL +/- .030			
BREAK SHARP EDGES			

PART NO. OXL382
OFFSET WELD LUG

DRAWN BY:
EHS
CHECKED BY:
DATE:
082602

HARGER

301 ZIEGLER DRIVE
GRAYSLAKE, IL 60030
(847) 548-8700

REVISION:
—
SCALE:
FULL
SHEET:
1 OF 1