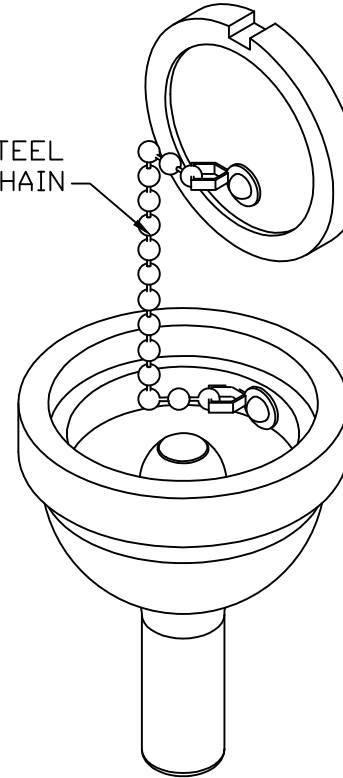
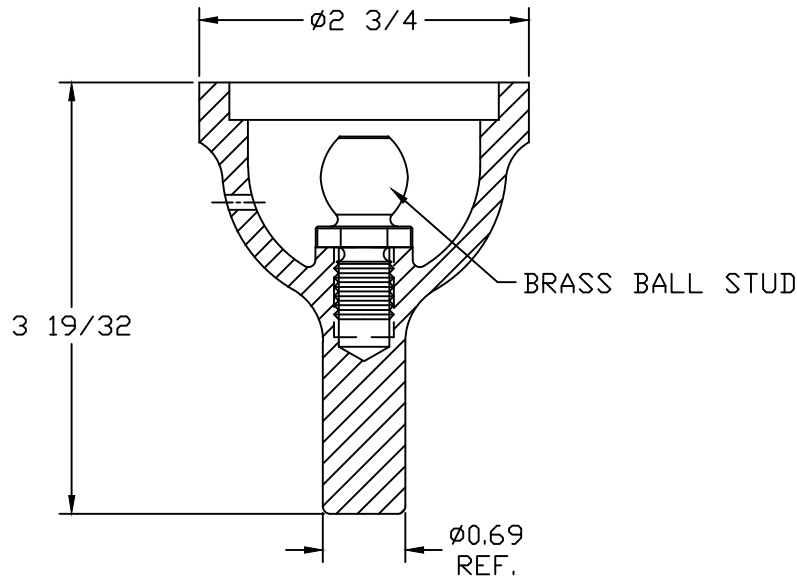


STAINLESS STEEL
BEADED CHAIN



BRONZE CAP



BRASS BALL STUD

BRONZE GROUND RECEPTACLE


STATIC GROUND RECEPTACLE EXOTHERMIC

EST WT 1.4#

APPROVED

☐ AS DRAWN: _____
☐ AS NOTED: _____
DATE: _____

THIS DOCUMENT AND THE CONTENTS THEREOF IS THE PROPERTY OF HARGER INC., AND IS FURNISHED TO YOU FOR INFORMATION ONLY. THE INFORMATION CONTAINED HEREIN IS CONFIDENTIAL AND OF A PROPRIETARY NATURE AND MUST NOT BE DISCLOSED TO THIRD PARTIES WITHOUT THE EXPRESS WRITTEN APPROVAL OF HARGER INC.

C	WAS 1.000	062920	LA
B	ADDED NOTE	072910	LA
A	WAS MS62S & 6-32 TAP	112206	LA
LET	REVISION	DATE	BY
TOLERANCES UNLESS NOTED:		3RD ANGLE	
FRACTIONAL +/- 1/16		PROJECTION	
DECIMAL +/- .030			
BREAK SHARP EDGES			

PART NO. SGRX
STATIC GROUND RECEPTACLE

DRAWN BY:
LAL
CHECKED BY:
DATE:
072606

HARGER™

301 ZIEGLER DRIVE
GRAYSLAKE, IL 60030
(847) 548-8700

REVISION:
C
SCALE:
5/8
SHEET:
1 OF 1